

ThinkPod<sup>x</sup>

# BEYOND BARRIERS

## The Art of Accessible Design



by

**Prof. Gaurav Raheja**

HOD, Architecture & Planning  
Founder, Laboratory of Inclusive Design  
IIT Roorkee

# About

At GPL we want to challenge the traditional norms by moving away from one-size-fits-all approach and recognize that each individual has unique needs and preferences. By putting people at the center of the design process, inclusive design seeks to understand their diverse perspectives, experiences, and challenges. This empathetic approach allows designers to identify barriers and develop innovative solutions that accommodate a wide range of abilities and characteristics.

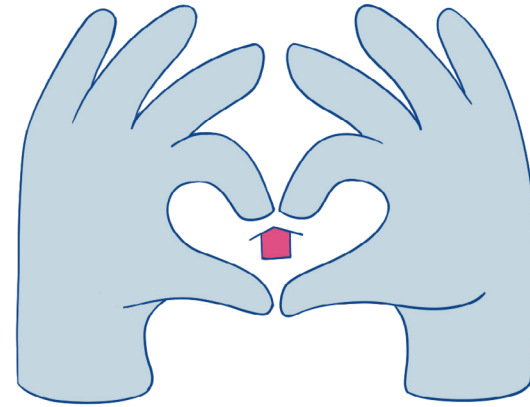
We want to capture the essence of accessible design, which is about embracing the power of diversity, celebrating human differences, and shaping a more inclusive and equitable world where everyone can actively engage and thrive.

## Prof. Gaurav Raheja

Professor is a passionate leader of design thinking, accessibility and inclusion from IIT Roorkee, India steering several professional initiatives, advisory roles and research both nationally and internationally towards creation of human centric built environments.

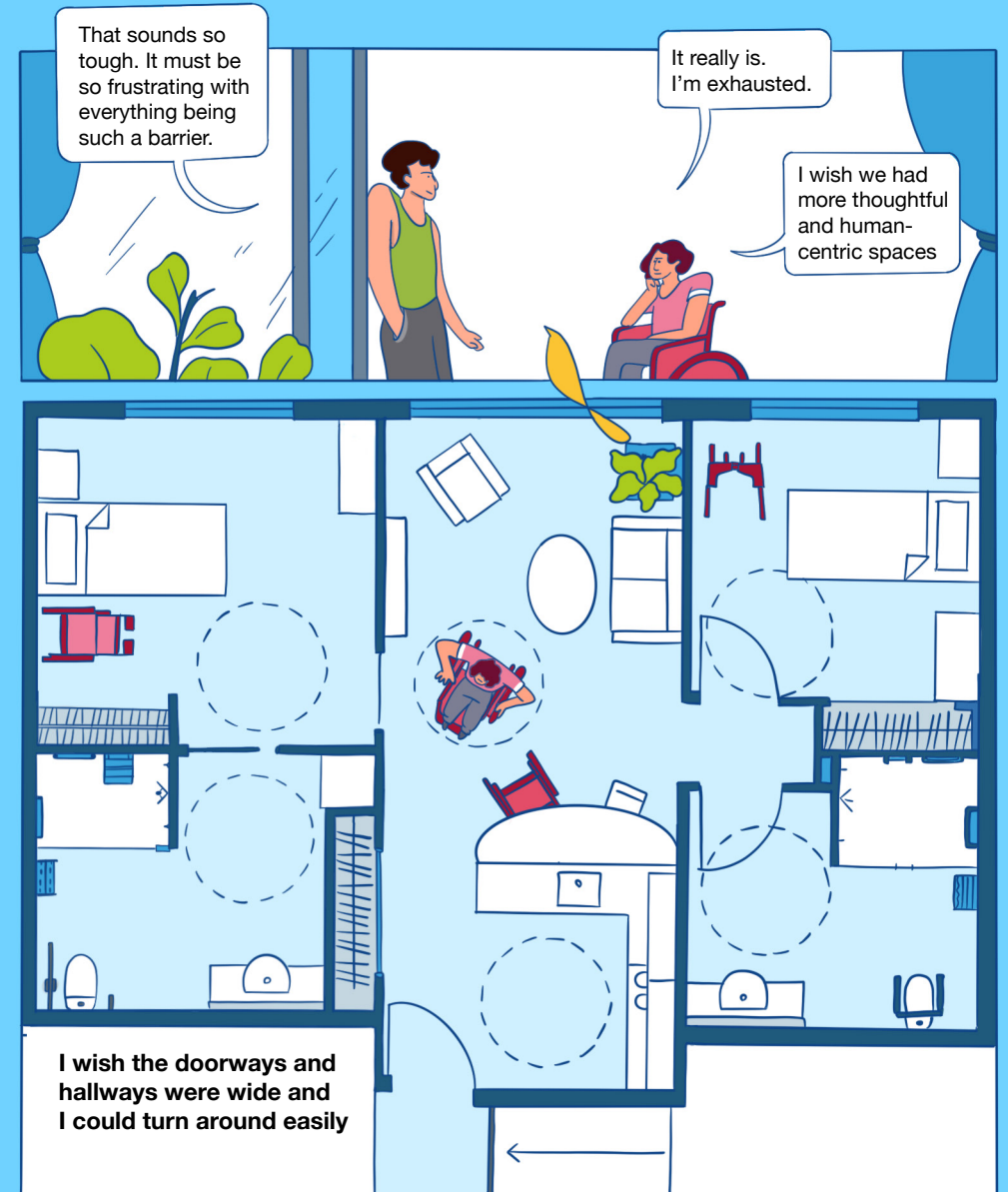
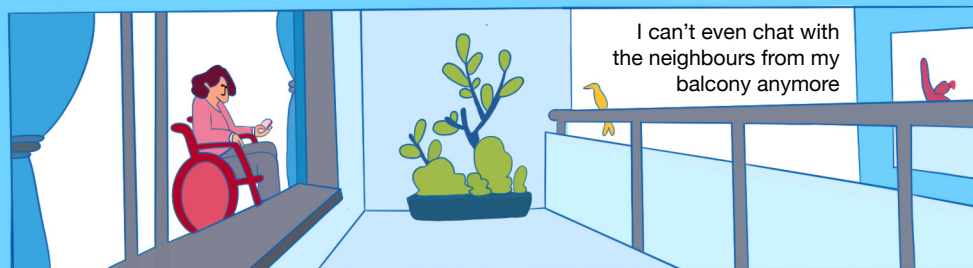
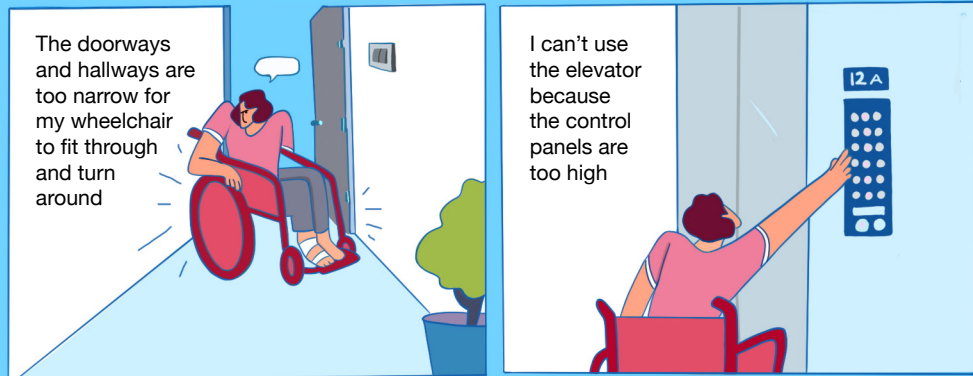
Published on 18.08.2023  
Copyright ©, August 2023

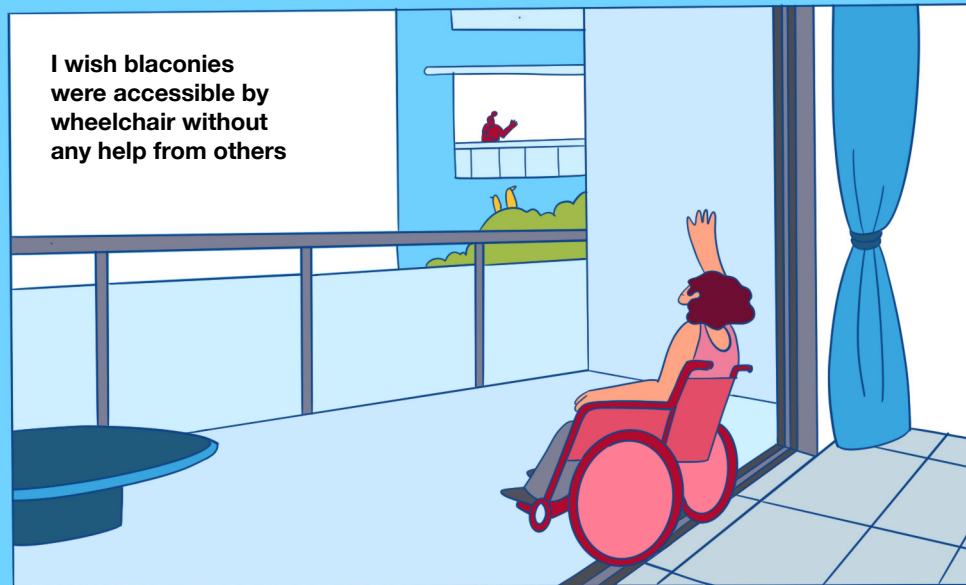
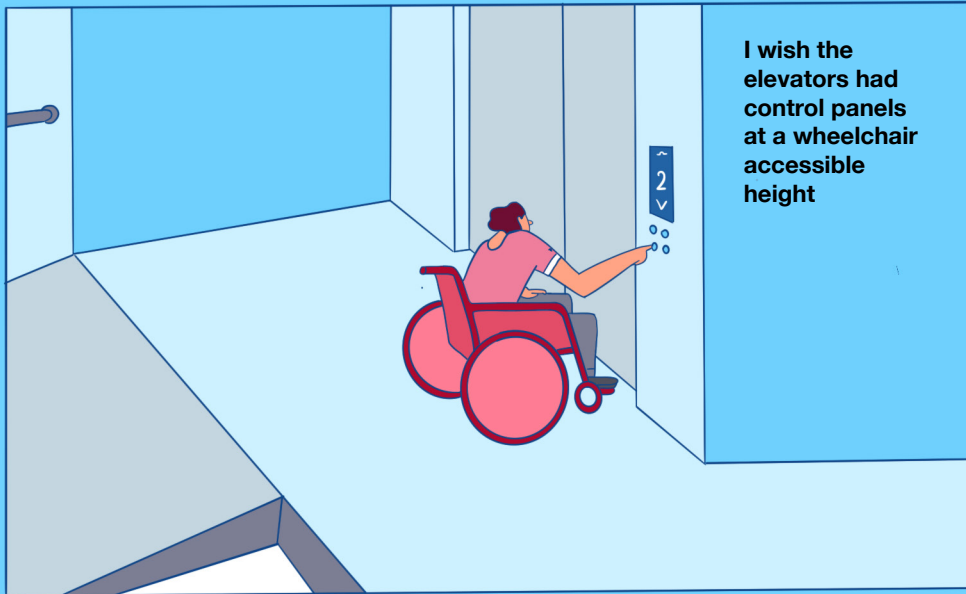
This document is co-created by and copyright of Gaurav Raheja & GPL Design Studio. All characters portrayed in the document are a work of creative fiction. Any resemblance with any person, living or dead is purely coincidental.



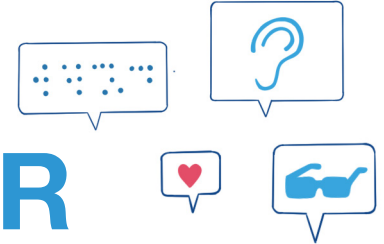
**A HOME IS A  
HOME ONLY IF,  
IT INCLUDES  
EVERYONE**

# Rahul's Home Sweet Accessible Home





# UNIVERSAL IS THE LENS FOR ACCESSIBILITY



## **Inclusive design defined:**

A design methodology that considers the needs and preferences of a broad spectrum of users, to ensure that everyone can participate and interact fully and independently with the designed solution. The goal of inclusive design is to break down barriers, eliminate discrimination, and foster a more equitable and inclusive society.

## **Accessibility defined:**

The qualities that make an experience open to all. It involves removing barriers and creating inclusive solutions that cater to diverse user needs, ensuring that individuals with disabilities or restricted mobility, temporary or permanent, can navigate, perceive, understand, and interact with the designed elements without facing unnecessary obstacles.

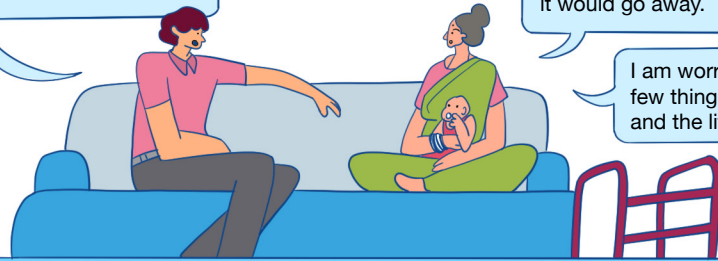
An important distinction between the two is that accessibility is an attribute, while inclusive design is a method. Ideally, they both work together to make experiences that are not only compliant with standards, but truly usable and open to all.

# Sarla Devi's Home for All Ages

Ma, you really should've told me before that your hip pain had become this bad.

I just wanted to enjoy my time with you and the kids. I thought once I started using the walker it would go away.

I am worried about a few things for myself and the little ones



I am always stressed about tripping on the slippery bathroom and lobby flooring



Kids have to cross the complex road to get to the park on the other side.

I just don't feel safe about that!

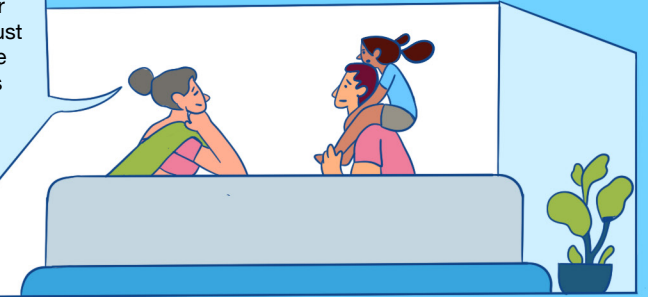


It was tough finding my way back home the other day you dropped me at the clubhouse

I wish I could walk around the complex without feeling lost.



I wish I didn't have to bother you for everything. They must also think of elders and little kids while designing homes and residential premises. Imagine a thoughtfully designed home!



**A home that's safe with non-slip flooring in the bathrooms and grab bars to hold onto for support**







# The Real is Life, If Estates can Empathise

Move in sight to Park it Right  
Move up the elevator,  
Through a step free guide

Reach your floor and press the bell  
Open the wide door for a story to tell  
Grip the floor and Contrast the Walls  
Make sure you hold on, being short or tall.

Adjust the kitchen counter a bit and  
make room in the balcony to sit  
Gossip a while as you unwind for the day  
Use the washroom with care without delay

The story of house is an environment to gel  
It truly is a loving home when "All's Well"

By Gaurav Raheja